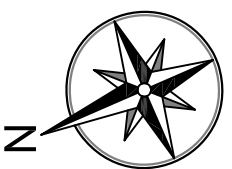
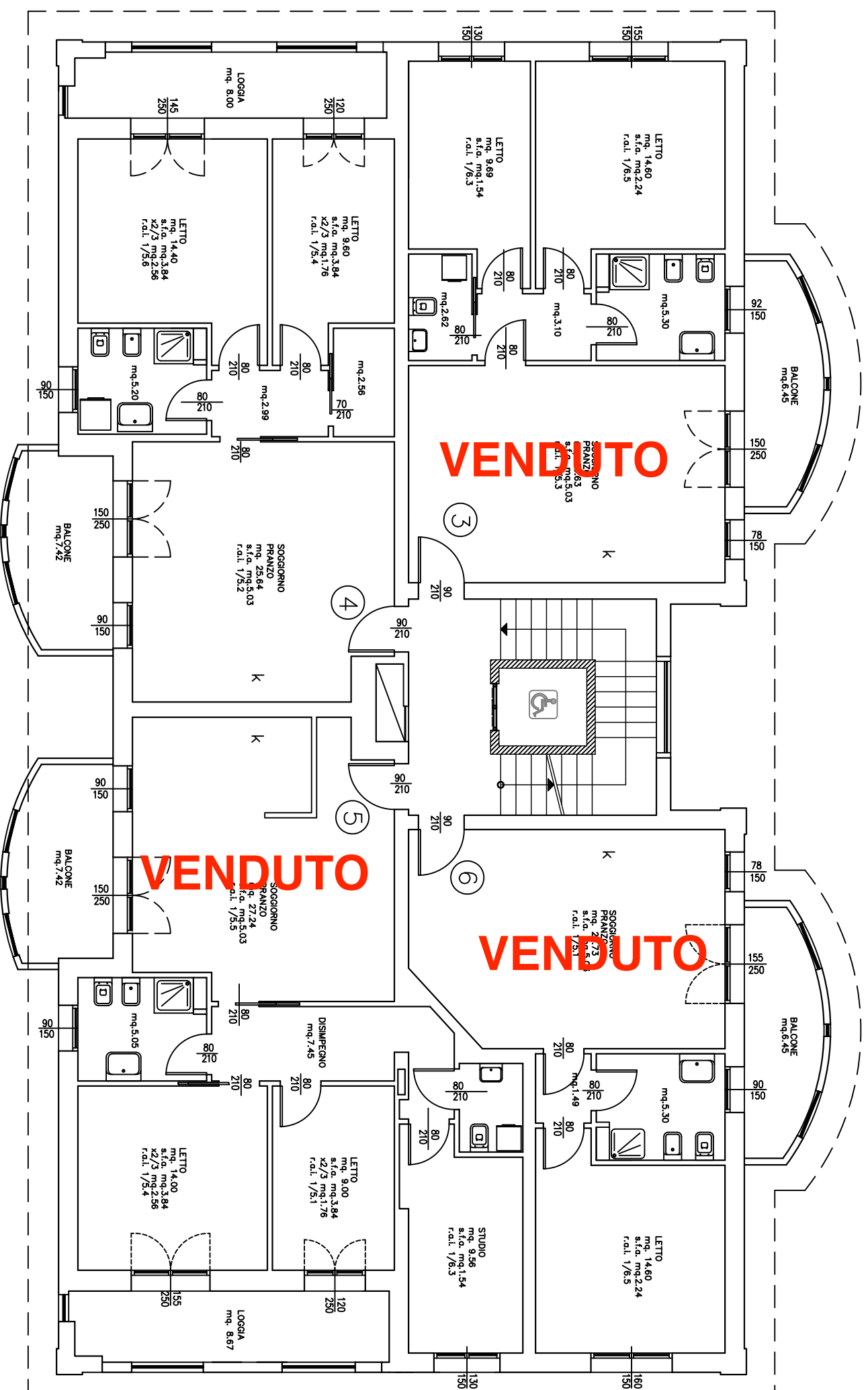


VENDUTO

COMMERCIALE
appartamento "3" = mq. 74,24
Balcone mq. 7,36 x 50 % = mq. 3,68
totale appartamento = mq. 77,92

PIANO PRIMO

COMMERCIALE
appartamento "6" = mq. 57,19
Balcone mq. 7,36 x 50 % = mq. 3,68
totale appartamento = mq. 60,87



COMMERCIALE
appartamento "4" = mq. 72,95
Loggia mq. 10,16 x 50 % = mq. 5,08
Balcone mq. 8,19 x 50 % = mq. 4,10
totale appartamento = mq. 82,13

COMMERCIALE
appartamento "5" = mq. 89,30
Loggia mq. 10,45 x 50 % = mq. 5,23
Balcone mq. 8,19 x 50 % = mq. 4,10
totale appartamento = mq. 98,63