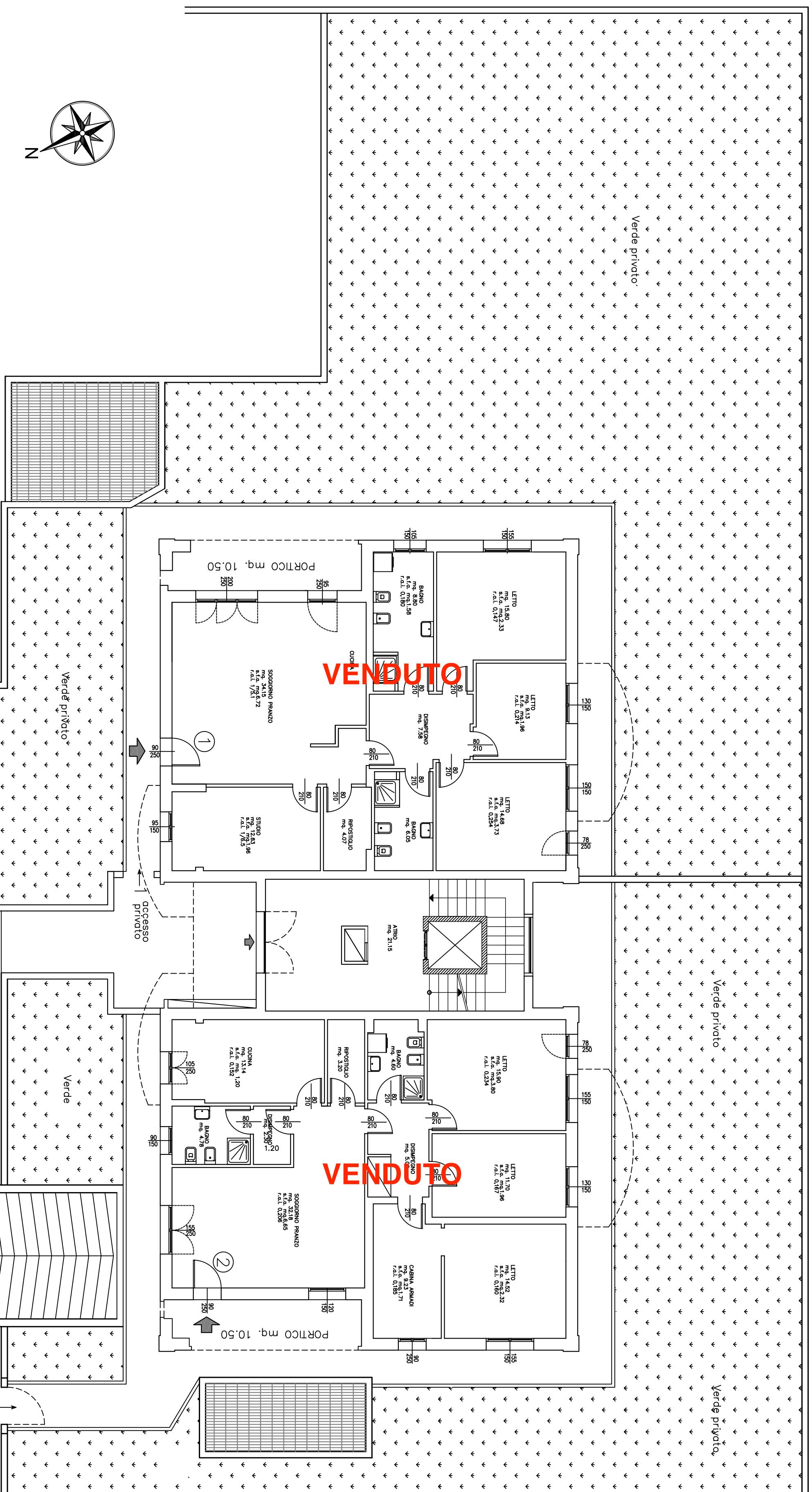


# PIANO TERRA



**COMMERCIALE**

appartamento "1" = mq.136,20  
 Portico mq.10,80 x 50 % = mq. 5,40  
 Giardino mq.483,00 x 5 % = mq.24,15  
 totale appartamento = mq.165,75

**COMMERCIALE**

appartamento "2" = mq.137,76  
 Portico mq.10,80 x 50 % = mq. 5,40  
 Giardino mq.292,80 x 5 % = mq.14,64  
 totale appartamento = mq.157,80